



## **WVW 2022-2023 Boundary Changes**

### **ELEMENTARY BOUNDARY ASSIGNMENTS:**

- North of Division St, odd number addresses, West side of Wyoming Avenue and North of Union/Lathrop Streets, East side of Wyoming Avenue, goes to DANA (Schuyler population). (KG goes to DANA)
- South of Division, even number addresses, on West side of Wyoming Avenue goes to STATE (Schuyler/State population). (KG goes to STATE)
- South of Union/Lathrop Streets, East side of Wyoming Avenue, goes to CHESTER (no change). (K goes to THIRD)
- South of Division on East side of Wyoming Avenue goes to CHESTER (no change). (K goes to THIRD)

### **CHANGES AFFECT CURRENT SCHUYLER STUDENTS AND EDWARDSVILLE K STUDENTS ONLY:**

1. Schuyler K students go to the building that houses the Kindergarten students for the elementary school that they will attend (or where their older siblings will go now).
2. Edwardsville K students will attend Third Avenue K Center and return to State for Grade 1.

(See attached maps)



# DANA STREET



Andy Derogio's

Forty Fort

Pringle

IBEW Local 1319

Keeley's Ale House & Grille

Ther's Metro

PNC Bank

Amberdonia Bakery - Kingston

Turkey Hill Mini Market

Commonwealth Health First Hospital

The Canning House

Sdk Green Acres Apartments

The Strange and Unusual

Google

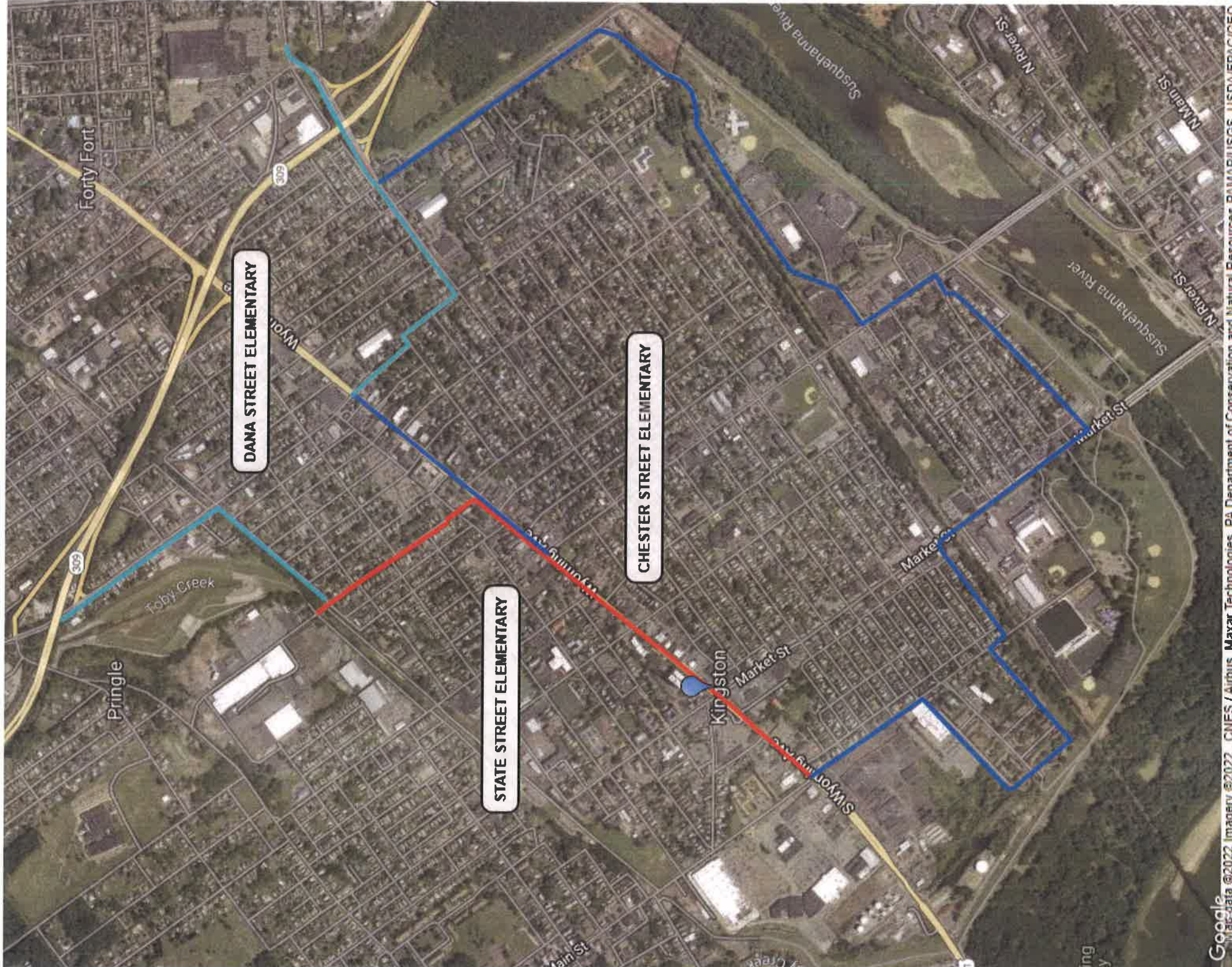
arty's Eating and Establishment

Cafe

Milford Dr

Left





Forty Fort

DANA STREET ELEMENTARY

CHESTER STREET ELEMENTARY

STATE STREET ELEMENTARY

Kingston

Market St

Market St

Market St

Pringle

Toby Creek

Susquehanna River

Susquehanna River